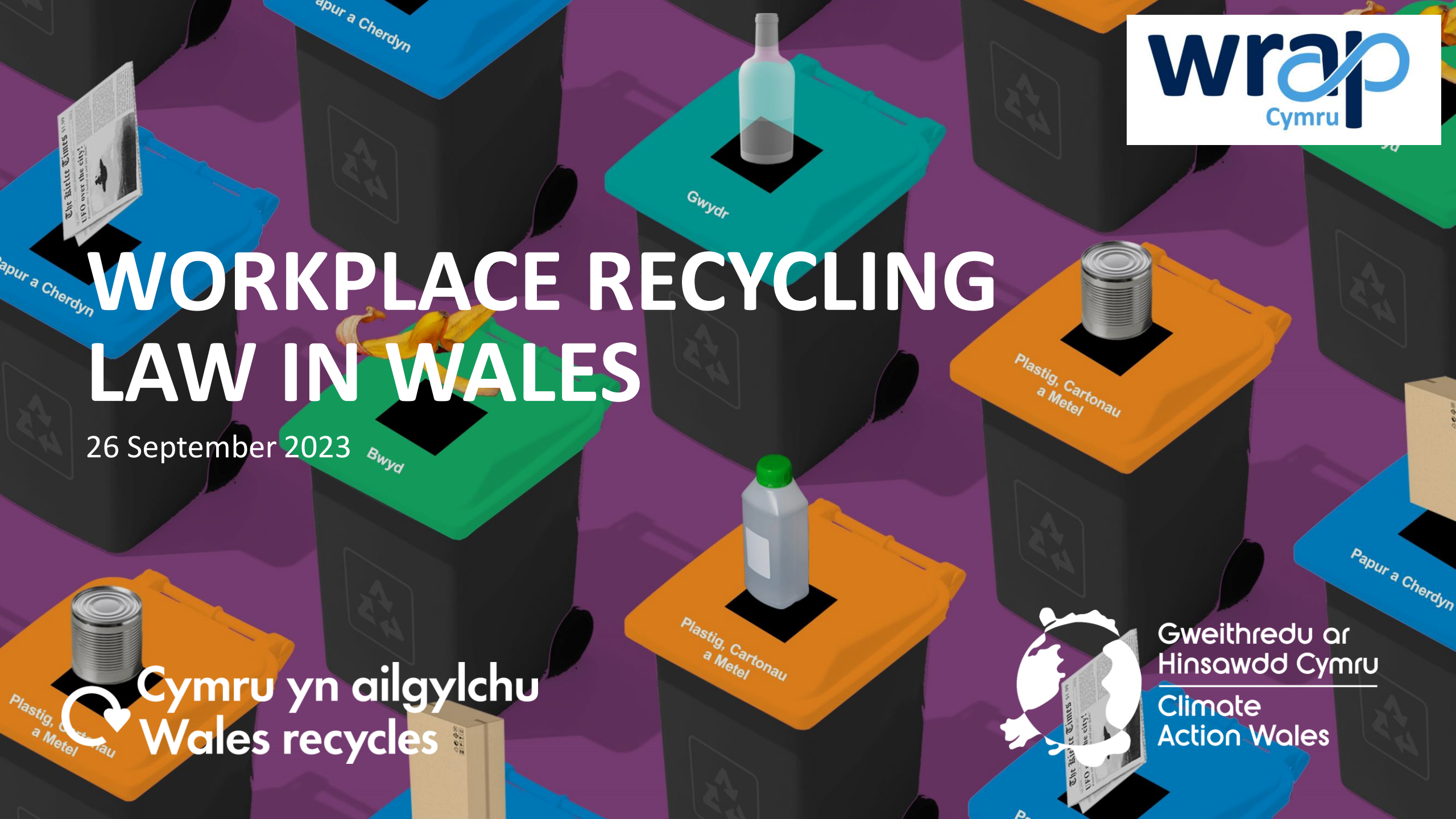




# WORKPLACE RECYCLING LAW IN WALES

26 September 2023



 Cymru yn ailgylchu  
Wales recycles



Gweithredu ar  
Hinsawdd Cymru  
Climate  
Action Wales

# About WRAP

- WRAP (the Waste and Resources Action Programme) is a climate action NGO working around the globe to tackle the causes of the climate crisis and give the planet a sustainable future. We were established in the UK in 2000; we now work in 40+ countries.
  - Working around the globe with governments, businesses, and citizens, our mission is to make the world a more sustainable place. We bring people together, we act on the facts, and we drive change.
  - We are working with Welsh Government to provide support to implement the new Workplace Recycling law.
-

# New Regulations - 6th April 2024\*

- All workplaces such as businesses, public sector and charities will need to **separate their recyclable materials** in the same way most households already do.
- **Bans on the disposal of all food waste to sewer** from non-domestic premises.
- **Bans** on specified **separate recyclable** waste streams going to **incineration plants and landfills**.

Applies to all waste and recycling collectors and processors who manage **household-like waste** from workplaces.

*\*Hospitals (NHS and private) have an additional two years to comply with the separation requirements. The ban on food waste to sewer applies from 6th April 2024.*

---

# Household-like waste

- Waste materials like those found in households
- Commonly collected by local authorities from households
- Also includes unsold small waste electricals and unsold textiles

Does not include:

- Construction waste
- Industrial waste
- Agricultural waste

Except for commonly recycled waste materials like those found in households.



# Why?

- Wales is already really good at household recycling, currently 1st among the UK nations for household recycling – 65%.
- 3rd best nation in the world for household recycling.
- The aim is to ensure high recycling rates across all sectors, not only households.
- Over 70% of materials in the commercial waste stream could be recycled.



# Why?

**This will enable a consistent recycling system wherever anyone works, rests or plays.**

---

# WHO?

Including:

- agricultural premises;
  - bars and public houses;
  - bed and breakfasts, hotels;
  - bus stations, railway stations, seaports, airports, heliports;
  - campsites and caravan parks (but not individual caravans);
  - care homes, residential care homes and nursing homes;
  - cinemas;
  - community centres and village halls;
  - construction sites;
  - educational establishments such as universities, colleges and schools;
  - entertainment and sports venues, including leisure centres;
  - factories;
  - film and television production sets;
  - garages for vehicle servicing and repair;
  - garden centres;
  - heritage buildings;
  - holiday parks and resorts;
  - hospitals;
  - libraries and museums;
  - offices;
  - outdoor markets
  - pharmacies, doctors' surgeries, dental surgeries, optometrists, opticians, podiatrists and other primary care facilities;
  - places of worship;
  - prisons;
  - restaurants and cafes;
  - service stations and petrol stations;
  - shops and shopping centres;
  - showgrounds;
  - sports grounds and stadia;
  - take aways & mobile food vendors;
  - theatres and arts venues;
  - venues for temporary events such as festivals and shows, including outdoors events;
  - warehouses; and
  - workshops.
-

# WHO?

Holiday lets:

|   | Second homes / holiday lets that are <u>domestic premises</u> | Second homes/ holiday lets that are <u>non- domestic premises</u> |
|---|---|---|
| Pay council tax   | ✓   | ✗   |
| Pay business rates  | ✗   | ✓   |
| Meet the threshold of available to let 252 days and actually let 182 days per year. | ✗   | ✓   |
| Receive free household waste collections from council                               | ✓   | ✗   |
| Come under the Workplace recycling regulations                                      | ✗   | ✓   |



# The new laws have three parts

1. The separation requirements
2. Incineration and landfill bans
3. A ban on the disposal of food waste to sewer



# 1. The separation requirements

The following materials will need to be collected separately:

- Paper and card
- Glass
- Metal, plastic, and cartons (and other similar packaging, for example coffee cups)
- Food – only for premises that produce more than 5kg of food waste a week
- Unsold small waste electrical and electronic equipment (sWEEE)
- Unsold textiles

**Materials to be kept separate at point of presentation to waste collector**

**Separately collected recyclable materials to be kept separate and not mixed**

---

## 2. Incineration and landfill bans

### Incineration (separately collected materials)

- Paper and card
- Metals
- Plastic
- Glass
- Cartons
- Food
- All sWEEE
- Unsold textiles

### Landfill (separately collected materials)

- Paper and card
- Metals
- Plastic
- Glass
- Cartons
- Food
- All sWEEE (includes unsold)
- All textiles (includes unsold)

**Ban all wood waste from non-domestic and domestic premises to landfill**

# 3. A ban on the disposal of food waste to sewer

- A ban on disposal of all food waste to sewer including via macerators, de-waterers or Enzyme treatment.
- This will divert waste food from disposal to Anaerobic Digestion (AD) and generate renewable energy.
- Food waste to be collected separately at source from all workplaces producing 5kg per week or more.



# Workplaces that produce and handle food waste

The law to separate and recycle food waste applies to any premises that produce over 5kg of food waste per week, such as:

- Hotels
  - Restaurants
  - Cafés
  - Takeaways
  - Catering businesses (including those at events such as food stalls and events)
  - Shopping centre food courts
  - Sports stadiums
  - Canteens
  - Pubs
  - Offices with canteens, cafes or staff kitchen facilities
  - Schools, colleges, prisons, nursing homes and hospitals and
  - Any other workplaces that serve food.
-

# WRAP support for food waste reduction

WRAP provides support for food businesses to reduce food waste via:

- [The Guardians of Grub](https://guardiansofgrub.com/) campaign supports Hospitality and Food Service businesses to reduce the alarming amount of food wasted every single year.
- [WRAP Food Waste Reduction Roadmap Toolkit](https://wrap.org.uk/resources/tool/food-waste-reduction-roadmap-toolkit) is an industry wide roadmap and toolkit that helps food businesses take targeted action to reduce waste in their own operations, their supply chain and from consumers.

<https://wrap.org.uk/resources/tool/food-waste-reduction-roadmap-toolkit>

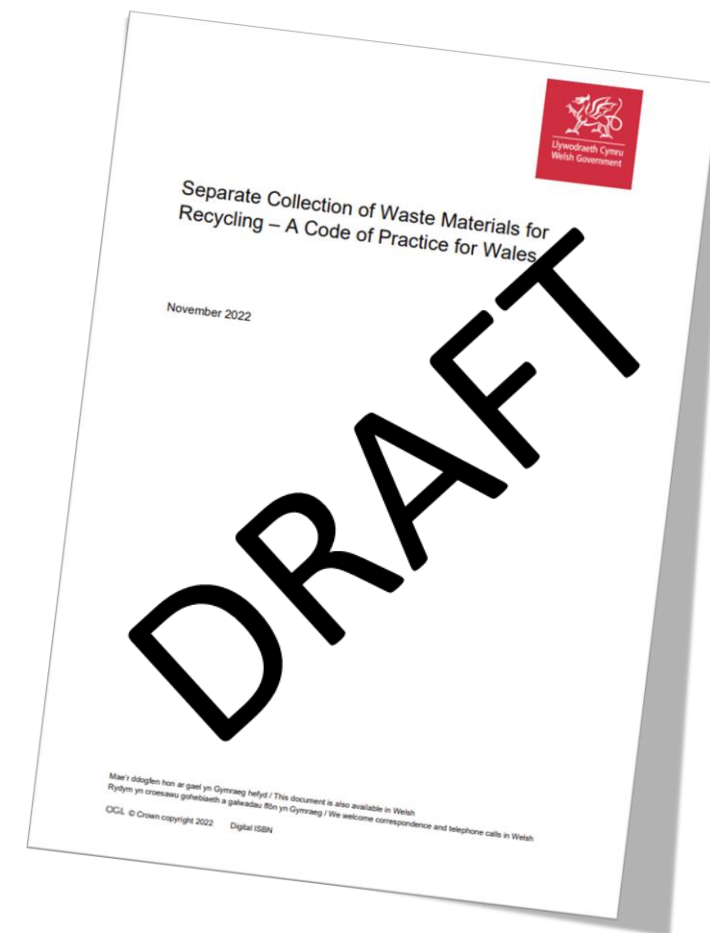


# Enforcement of the new laws

- Natural Resources Wales (NRW) is responsible for making sure that materials are being separated and collected correctly, and that the ban on recycling going to incineration and landfill is being followed.
  - Local Authorities are responsible for making sure the ban on food waste going to sewer is followed.
  - If you do not comply with the law, it could mean a fine for your workplace.
  - Occupiers of premises are responsible and liable for the actions of their staff.
-

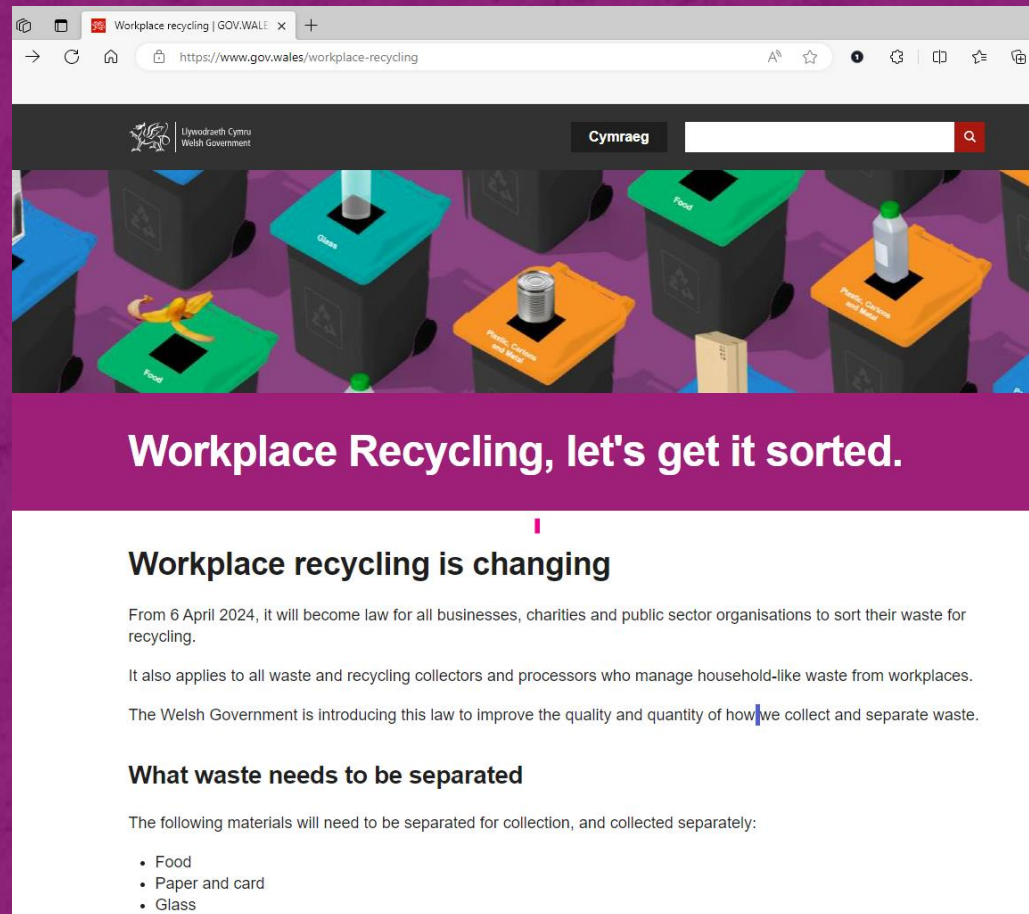
# How to Get Ready

Read the Code of Practice – it contains all the detail about how to comply with the regulations





# Information available



Workplace recycling | GOV.WALES

https://www.gov.wales/workplace-recycling

Llywodraeth Cymru  
Welsh Government

Cymraeg

Workplace Recycling, let's get it sorted.

## Workplace recycling is changing

From 6 April 2024, it will become law for all businesses, charities and public sector organisations to sort their waste for recycling.

It also applies to all waste and recycling collectors and processors who manage household-like waste from workplaces.

The Welsh Government is introducing this law to improve the quality and quantity of how we collect and separate waste.

### What waste needs to be separated

The following materials will need to be separated for collection, and collected separately:

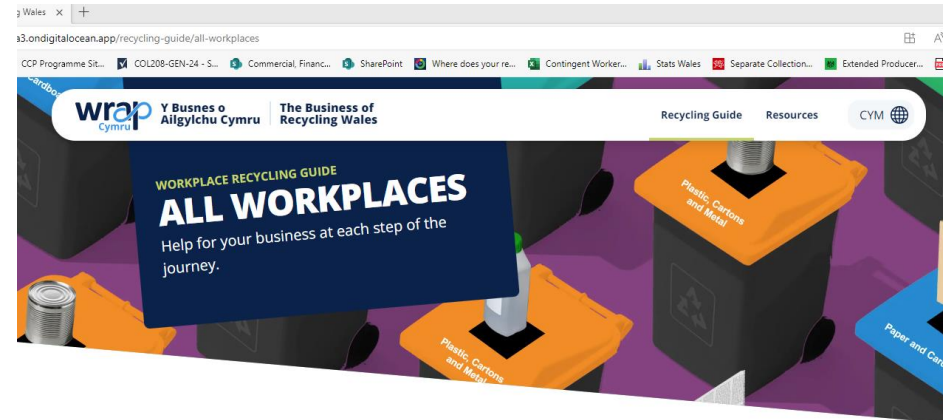
- Food
- Paper and card
- Glass

- Welsh Government webpage
- General guidance on the changes
- [Workplace recycling | GOV.WALES](https://www.gov.wales/workplace-recycling)
- [gov.wales/workplacerecycling](https://gov.wales/workplacerecycling)

# WRAP Cymru Support



## New 'Business of Recycling Wales' website (28<sup>th</sup> Nov)



### Guidance for all workplaces

The new recycling law applies to all workplaces in Wales.

This is a summary of the changes and offers tips on how you can get ready.

The law comes into effect on **6 April 2024**. It means all workplaces such as businesses, public sector and charities will need to separate their recyclable materials in the same way most households already do.

It also applies to all waste and recycling collectors and processors who manage household-like waste from workplaces.

#### Covered in this guide

- [What is the new law?](#)
- [How the law will be enforced](#)
- [How to get ready](#)
- [Further support and guidance](#)

[businessofrecycling.wrap.org.uk](https://businessofrecycling.wrap.org.uk)

# WRAP Cymru Support



**Sector specific guidance, case studies and webinars, on how to comply with the new regulations for the following sectors:**

- Hospitality and food services
- Retail
- Small and medium size businesses (SMEs)
- Education settings and universities
- Residential settings (including care homes)
- Outdoor events (for example festivals)
- Entertainment and leisure facilities (including campsites, chalets, lodges, hotels, caravans)

# WRAP Cymru Support

Communication resources

- Posters, bin stickers
- Material stream icons, including new stream

Workplace Recycling: imagery for recycling signage and containers | WRAP ([wrapcymru.org.uk](http://wrapcymru.org.uk))

|  |   |  |
|--|---|--|
|  | <p>plastig, cartonau a metal<br/>plastic, cartons &amp; metal</p> |  |
|--|---|--|

## CARBORD A PHAPUR CARDBOARD & PAPER

|  |  |  |
|--|--|--|
| <p>✓ <b>le plis</b>    ✓ <b>Yes please</b></p>   |  |  |
| <p>Cardbord<br/><br/>Cardboard</p>   | <p>Papur swyddfa<br/><br/>Office paper</p> |  |
| <p>Amlenni<br/><br/>Envelopes</p>  | <p>Papurau newydd<br/><br/>Newspapers</p>  |  |
| <p>Llyfrynau a chatalogau<br/><br/>Brochures &amp; catalogues</p>  | <p>Cylchgronau<br/><br/>Magazines</p>      |  |
| <p>✗ <b>Dim diolch</b></p> <ul style="list-style-type: none"> <li>✗ Gwasttraff bwyd neu hylifau</li> <li>✗ Bagiau Jiffy, neu amlenni gyda phadin neu swigod</li> <li>✗ Swigod lapio</li> <li>✗ Bagiau neu ddeunydd lapio plastig</li> <li>✗ Cartonau bwyd neu ddiod</li> <li>✗ Cwpanau coffi</li> <li>✗ Hancsi neu dyweli papur</li> </ul> |  |  |
| <p>✗ <b>No thank you</b></p> <ul style="list-style-type: none"> <li>✗ Food waste or liquids</li> <li>✗ Jiffy bags, padded or bubble envelopes</li> <li>✗ Bubble wrap</li> <li>✗ Plastic bags or wrapping</li> <li>✗ Food or drink cartons</li> <li>✗ Coffee cups</li> <li>✗ Paper tissues or towels</li> </ul>                             |  |  |

busnesoailgylchucymru.com | businessofrecyclingwales.com

## GWASTRAFF BWYD FOOD WASTE

|  |  |  |
|--|--|--|
| <p>✓ <b>le plis</b>    ✓ <b>Yes please</b></p>   |  |  |
| <p>Bagiau te<br/><br/>Tea bags</p>   | <p>Gwaddodion coffi<br/><br/>Coffee grounds</p>          |  |
| <p>Crafion ffrwythau a llysiau<br/><br/>Fruit &amp; veg peelings</p>   | <p>Bwyd dros ben diangen<br/><br/>Unwanted leftovers</p> |  |
| <p>✗ <b>Dim diolch</b></p> <ul style="list-style-type: none"> <li>✗ Hylifau</li> <li>✗ Deunydd pacio</li> <li>✗ Bagiau neu deunydd lapio plastig</li> <li>✗ Cwpanau coffi</li> <li>✗ Papur cegin neu dyweli papur</li> </ul> |  |  |
| <p>✗ <b>No thank you</b></p> <ul style="list-style-type: none"> <li>✗ Liquids</li> <li>✗ Packaging</li> <li>✗ Plastic bags or wrapping</li> <li>✗ Coffee cups</li> <li>✗ Kitchen roll or paper towels</li> </ul>             |  |  |

busnesoailgylchucymru.com | businessofrecyclingwales.com

# WRAP Cymru Support



- User guide on how to make best use of the resources
- PowerPoint template to use in staff briefings
- FAQs
- Email – [WalesRecycles@wrap.org.uk](mailto:WalesRecycles@wrap.org.uk) / [CymruYnAilgylchu@wrap.org.uk](mailto:CymruYnAilgylchu@wrap.org.uk)

**The Business  
of Recycling**

User Guide

**wrap** The Business  
of Recycling

# Public support for the changes



WG survey found 77% of respondents were in favour of the workplace recycling changes

<https://www.gov.wales/public-attitudes-changes-workplace-recycling-and-ban-single-use-plastics>



# Bluestone Wales



Holiday park in Pembrokeshire's National Park with guest lodges, restaurants, cafés, retail outlets, health spa, water park and leisure activities on site.

- Bluestone already separates materials to meet requirements.
- Plus nappies, cooking oil and coffee grounds are collected separately.
- Less than 1% of its waste went to landfill in 2022



# Summary

- 6 April 2024
- Applies to all workplaces
- Requirement to separate for recycling
- No food waste to sewer
- Bans on certain waste streams going to incineration and landfill



**Any questions?**



# Diolch Thank you

[WalesRecycles@wrap.org.uk](mailto:WalesRecycles@wrap.org.uk)

[CymruYnAilgylchu@wrap.org.uk](mailto:CymruYnAilgylchu@wrap.org.uk)



Gweithredu ar  
Hinsawdd Cymru

---

Climate  
Action Wales